

HOME OF THE BRAVE QUILT BLOCK DIRECTIONS

Home of the Brave Quilt Project was started by Don Beld, a CBQ member, in order to honor the fallen heroes in Iraq and Afghanistan by making replicas of a Civil War U.S. Sanitary Commission quilt.

Quilts are adorned with inspirational messages and condolences. Each quilt carries a tribute, reading:

*"This replica of a Civil War U.S. Sanitary Commission quilt
was given to the family of who died from injuries received
while on active duty in Iraq (or Afghanistan).
By the members of Citrus Belt Quilters, Redlands, CA 2006".*

One of the four remaining original Sanitary Commission quilts may be viewed at the Lincoln Shrine, Redlands, CA.

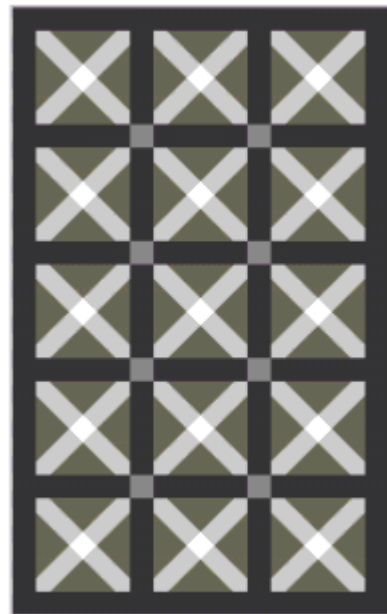
Don Beld is the National Coordinator for this project, extending into 40 states.

As of this date (February 2007), nationally, over 2,000 quilts have been presented to family members. More information on this project may be found on these websites: www.homeofthebravequilts.com and www.quiltersmuse.com. Use your favorite computer search engine, such as Google, type in "home of the brave quilt".

The quilt is purposely shown in shades of gray so you may use your own creativity. In selecting the colors, keep in mind that these quilts will be given to family members of the fallen. Reproduction fabrics may be used, but are not required. Dig into your stash or take a visit to your local fabric shop. Novelty prints or juvenile prints are NOT recommended.

Block size is 12". Sashing and border sizes: 3". Finished quilt should be about: 48"x78".

Alternate directions may be found at www.quiltersmuse.com.



EASY (ier) BLOCK DIRECTIONS

Select your fabrics — you will need enough for 15 blocks. You may use more than 2 fabrics, as desired. Cut 15 squares of fabric : 14 1/2".

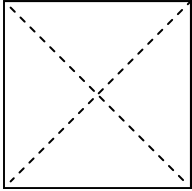


How much fabric to pull from your stash :
Main fabric—15 squares 14 1/2" — light and dark.
Sashing: 22 pieces 3 1/2 x 12 1/2" = 150"
Border: 3 1/2" x 230".
Cornerstones: 8 squares 3 1/2"
Centers of blocks, 15 squares of whatever size the original cuts.

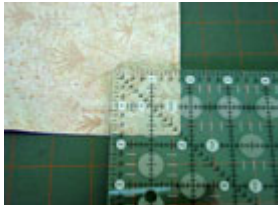
See next page for further purchase instructions.

According to Electric Quilt 6, the fabric purchase would be:
 Block stripes: 1 7/8 yard
 Block centers: 1/4 yard
 Border and sashing: 1 5/8 yard
 Block triangles: 1 3/8 yard
 Cornerstones: 1/8 yard

If you are digging into your stash, you can cut squares 10 1/4". Cut from corner to corner. This will yield the triangles for the blocks.



10 1/4" square.



On some of the lightest blocks, make marks 1 3/4" from each corner. Carefully stack the number of blocks to whatever you are comfortable cutting (4 or 6 or ?). Put block with the marks on top of pile. All of the blocks are cut the same way.

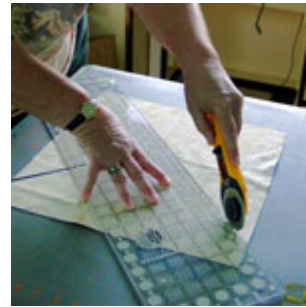
Note: Just in case you didn't notice, I am left handed. Please reverse the hand positions for right handed cutting.



Cut from mark to mark on both sides of the corners.

Do ***not*** move the fabric.

Either rotate the mat, or rotate your body. And now cut in the other direction.



In this example there are only two layers. On the right shows the two cut blocks.



Measure your center square. Cut 15 white or off-white blocks that size. Option: Either keep the original center squares for another project OR use these squares..

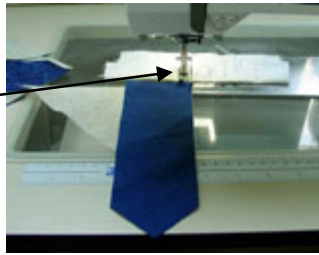


Imagine this block as a 9-patch construction.

The blocks will be "chain-pieced" (rt) for speed construction.

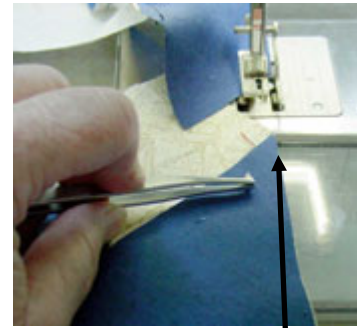


Note: By using a “starter strip” of folded fabric, you can eliminate all of those pesky threads. In addition, it helps to eliminate the fabric getting pulled down into the feeddogs.



Special note: the seams are ALL bias edges. Handle carefully. No stretching please. Your outside edges of the block will all be straight of grain (this is a good thing).

Align square corners of block. Sew with your best 1/4” seam.



If at all possible, **don't** feed the triangles in first — inevitably the points will get caught in the feeddogs.



Tweezers or stiletto or seam ripper will help to keep the triangle tip aligned correctly.

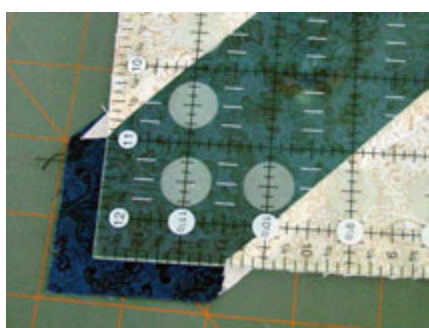


↓
Whenever possible, start your seam with the squared edges.



Note: the triangles just “kiss” — this is correct. You will trim to size later.

Press top and bottom seams IN; press middle seams OUT



After pressing, you will trim down to 12 1/2".



One completed block — only 14 more to go.

As presented in the above directions, the resulting color combinations would be to the right. Please feel free to change the coloration to your preference.



As quoted from The NewsPatcher, January 2005 issue, monthly publication of Citrus Belt Quilters.

“I firmly believe that no matter what your politics, the servicemen and servicewomen should be acknowledged and honored for their service to our country. This is NOT a political project. It is a project from the hearts of quilters to the hearts of soldiers, as well as from the hearts of mothers and fathers of young men and women everywhere.

As a great man once said, “They also serve who simply stand and wait” And we add, “and do what they can to ease the suffering of others.: Marilyn Maddalena Withrow.