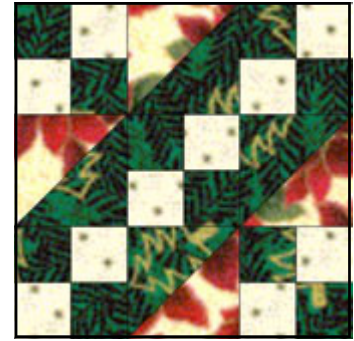


WAGON TRACKS

Block of the Month April 2007

(also named Jacob's Ladder and Underground Railroad)

12 1/2" unfinished



Cutting Instructions:

Color 1: 4 7/8" x 9 3/4"

Color 2: 4 7/8" x 9 3/4"

Color 1 AND Color 3: 2 1/2" x 25"

Fabrics:

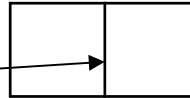
Color 1: Dark

Color 2: Medium

Color 3: Light

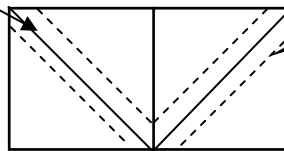
Sewing Directions:

Place right sides together, color 1 & 2 of the 4 7/8" x 9 3/4".



Mark the 4 7/8" line, then mark the diagonals.

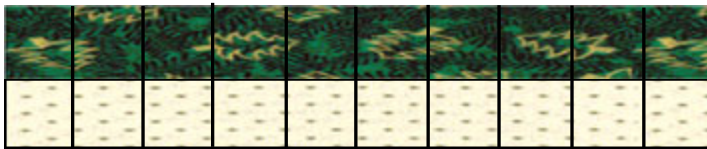
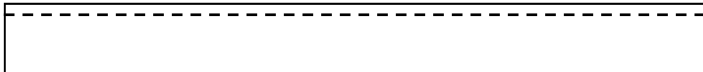
Sew a 1/4" above and below the marked diagonals.
Cut on the marked diagonals and on the 4 7/8".



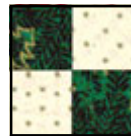
You now have four half square triangles. Press to dark side. Square to 4 1/2" if needed.



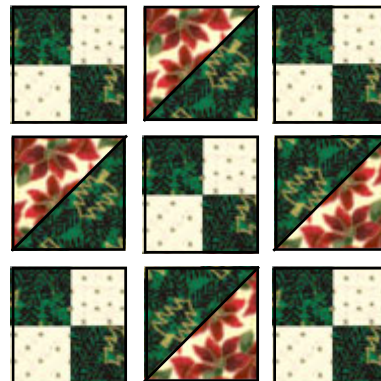
Now sew the color 1 & 3 strips of 2 1/2" x 25" right sides together.



Press to darker side. Cut this at 2 1/2" intervals. Sew pairs of these units together to make 4-patch units. You'll need five.



Lay out as shown. Sew three horizontal rows, pressing the top and bottom rows to the outside. Press center row to the inside.



*Christmas year
around sampler
quilt.
6 fabrics of 3/4
yard of light,
medium and dark*