

BLOCK of the Month: Let's go...Fly a KITE!

COLORS: **BRIGHTEST BRIGHT KITE** with **BLACK AND WHITE (B&W) BACKGROUND**

CUTTING for 8 ½" x 10 ½" unfinished blocks:

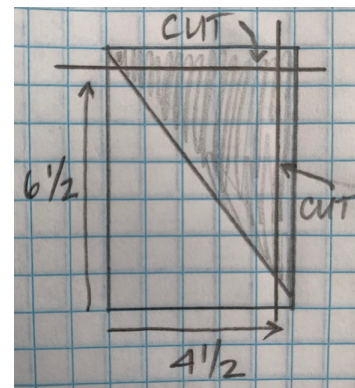
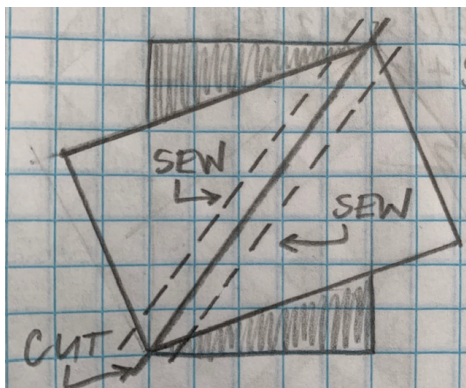
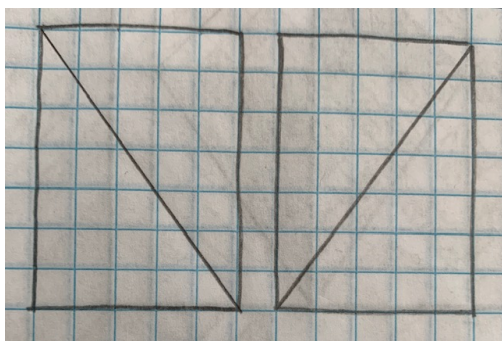
KITE: BRIGHT #1 (1) 5" x 5" (1) 5" x 7"

BRIGHT #2 (1) 5" x 5" (1) 5" x 7"

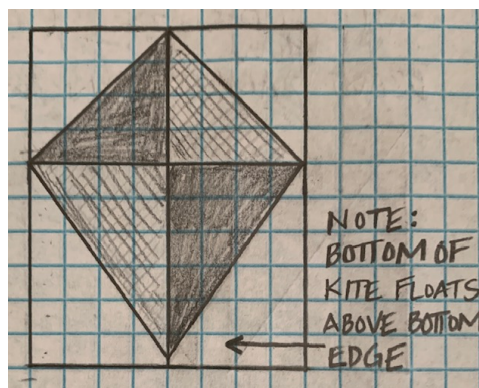
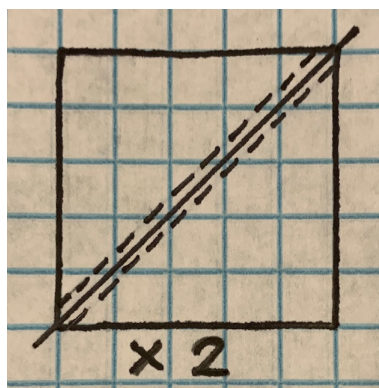
NOTE: Select two different BRIGHTS for your KITE. These directions will make two of the same block.

BACKGROUND: BLACK AND WHITE (2) 5" x 5" (2) 5" x 7"

SEWING: Draw a diagonal line on back of each **B&W 5"x7"**, as per diagram. **NOTE: the lines go in opposite directions on each 5"x7"**, this is important! Place one **B&W 5" x 7"** on top of each **BRIGHT 5"x 7"**, right sides together, as per diagram. **NOTE: this is NOT the same as half square triangles!** The rectangles must be askew, as per diagram. Sew ¼" on each side of drawn line, cut on drawn line, press to bright. Trim each of these (4) units to 4 ½" x 6 ½" as per diagram. **NOTE: start your measurement from the lower B&W corner of your unit. You trim only two sides of each of these (4) units.** The **BRIGHT** triangle in each of these units will not meet either corner of the unit. The upper corner will be about 1/8" away from the edge and the lower corner will be about ¼" away from the edge, this is correct.



Draw a diagonal line on back of each **B&W 5" x 5"**, as per diagram. Place one **B&W 5" x 5"** on top of each **BRIGHT 5" x 5"**, right sides together, as per diagram. Sew ¼" on each side of drawn line, cut on drawn line, press to **BRIGHT**. Trim to 4 ½" x 4 ½". Assemble two kite blocks as per diagram.



Select some of your **BRIGHTEST BRIGHTS** for the colors in you **KITES**. This pattern makes two identical **KITES** to fly in the breeze, each with **TWO BRIGHTS**. **BLACK AND WHITE** prints really make the **BRIGHTS** of the **KITES** stand out in the sky. How many **KITES** will you make?